

HIGHLIFE® COLLECTION

JETSETTER®



FreshWater® IQ
System Ready



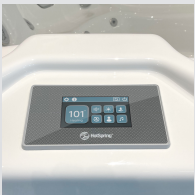
100% Filtration
SilentFlo Circulation



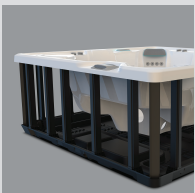
Moto-Massage® DX



Super Energy
Efficient



Color LCD
Touchscreen



Polymer Substructure
& Base Pan



Salt
System
Included
freshwater®

*Shown with Alpine White Shell
and Blackwood Cabinet*

People	Seating	Jets	Voltage
3 Seats	Lounge	22 Jets	115 V or 230 V

Size

7' x 5'8" x 33" | 213 cm x 173 cm x 84 cm

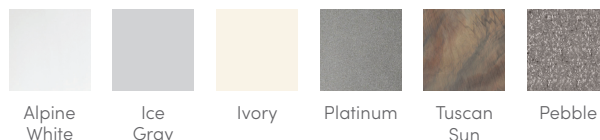
Water Care

FreshWater® Salt System Included

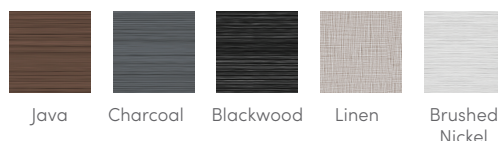
HIGHLIFE® COLLECTION JETSETTER®



SHELL COLORS



CABINET COLORS



COVER COLORS



CABINET AND SHELL COLOR OPTIONS*

Cabinet Colors	Java	Charcoal	Blackwood	Linen	Brushed Nickel
Shell Colors	Alpine White Ice Gray Ivory Tuscan Sun Pebble	Alpine White Ice Gray Platinum Tuscan Sun Pebble	Alpine White Ice Gray Platinum	Alpine White Ivory Tuscan Sun Pebble	Alpine White Ice Gray Platinum

LEGENDARY MESSAGE

22 Personalized-Control Jets

- Moto-Massage® Lounge
- Soothing Stream® Seat
- Precision® Jet Seat

EASY WATER CARE

Water Care System FreshWater® Salt System Included
Smart Monitoring System Optional

Filtration System 100% No-bypass Filtration
Exclusive, High-flow Tri-X® Filters
195 sq. ft. Filtration Area

LEADING ENERGY EFFICIENCY

Jet Pump	Wavemaster® 7000; One-speed, 1.65 HP Continuous Duty, 3.5 HP Breakdown Torque
Circulation Pump	SilentFlo 5000® for quiet, continuous filtration
Heater	Titanium No-Fault® 1,500 W / 115 V or 6,000 W / 230 V
Insulation	Multiple Layers of Foam Insulation; Certified to California Energy Commission (CEC) and APSP 14 energy efficiency standards for portable spas
Cover	WeatherPro™ 4" Tapered Custom-Fit with Hinge Seal

SIZE

Dimensions 7' x 5'8" x 33" / 213 cm x 173 cm x 84 cm

CAPACITY

Seating Capacity	3 seats with lounge
Water Capacity	245 gallons / 925 liters
Weight	500 lbs. / 225 kg dry; 3,070 lbs. / 1,390 kg filled**

ADDITIONAL FEATURES

Smart Spa Technology	Hot Spring Spas App, Powered by the Connected Spa Kit
Cover Lifters	CoverCradle®, CoverCradle II, Lift 'n Glide®, or UpRite® (F/B only)
Steps	Steps are available to match cabinet colors
Entertainment	Bluetooth® Wireless Sound System (Optional)
Control System	IQ 2020® with Color LCD Touchscreen 115 V / 20 amp (includes G.F.C.I. protected power cord) or 230 V / 50 amp, 60 Hz***
Lighting System	Luminescence® multi-color four-zone

*No special orders or shell substitutions available. Actual colors and products may vary from print representation. See dealer to verify.
Includes water and 3 adults weighing 175 lbs. each. *G.F.C.I. protected sub-panel required in 230 V mode.